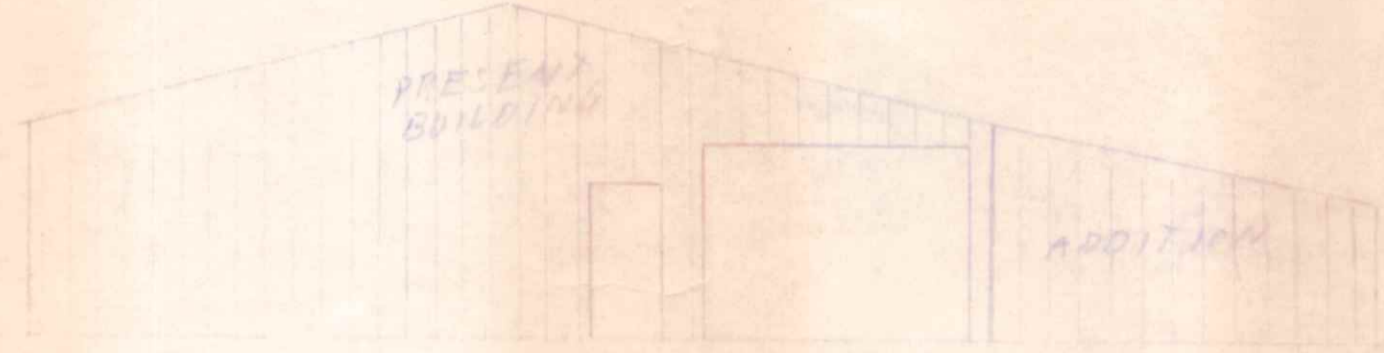
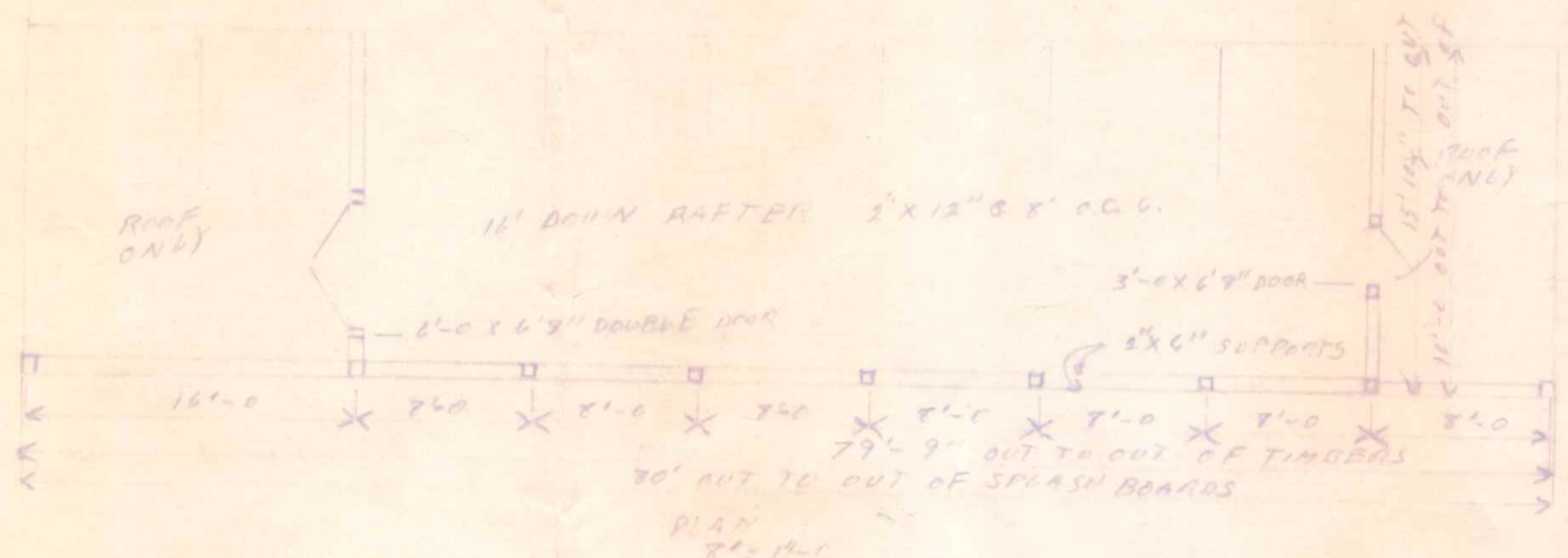
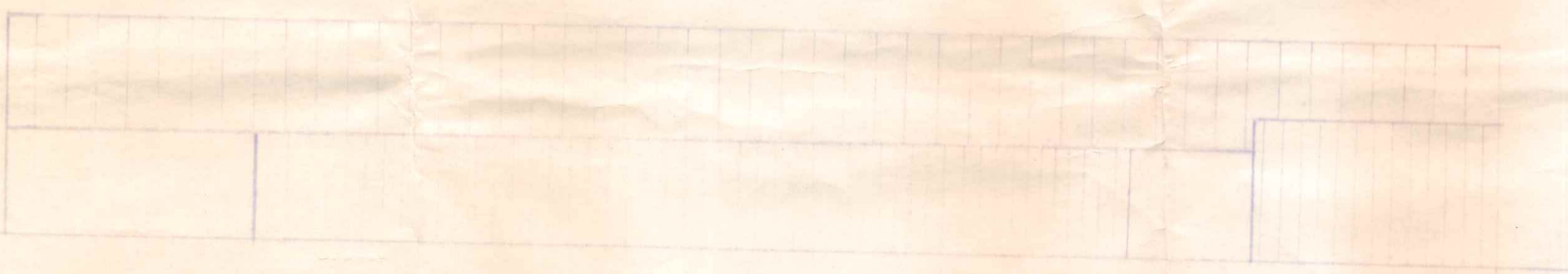


EXISTING ROOF BUILDING

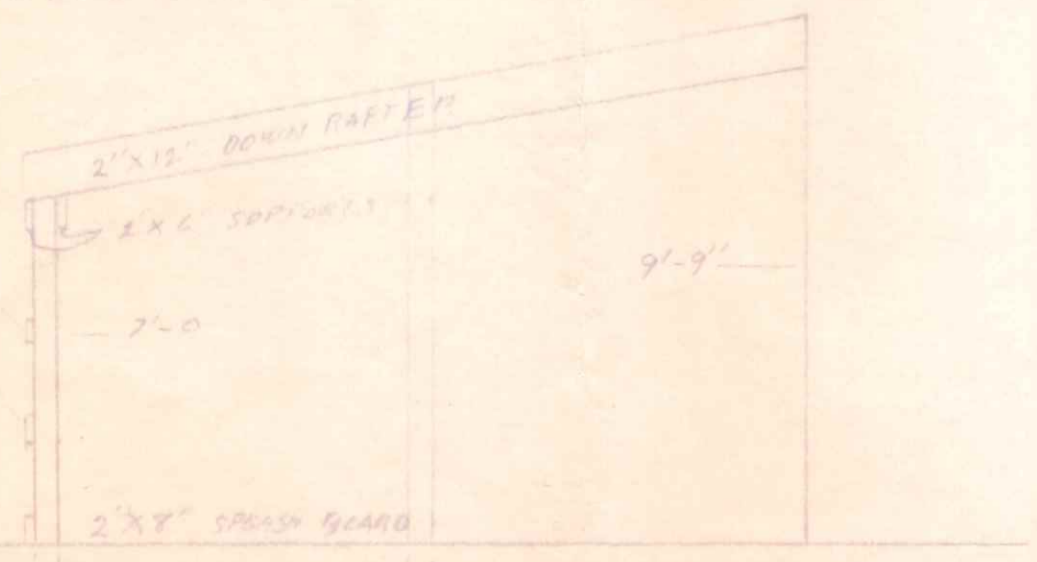


SOUTH END ELEVATION



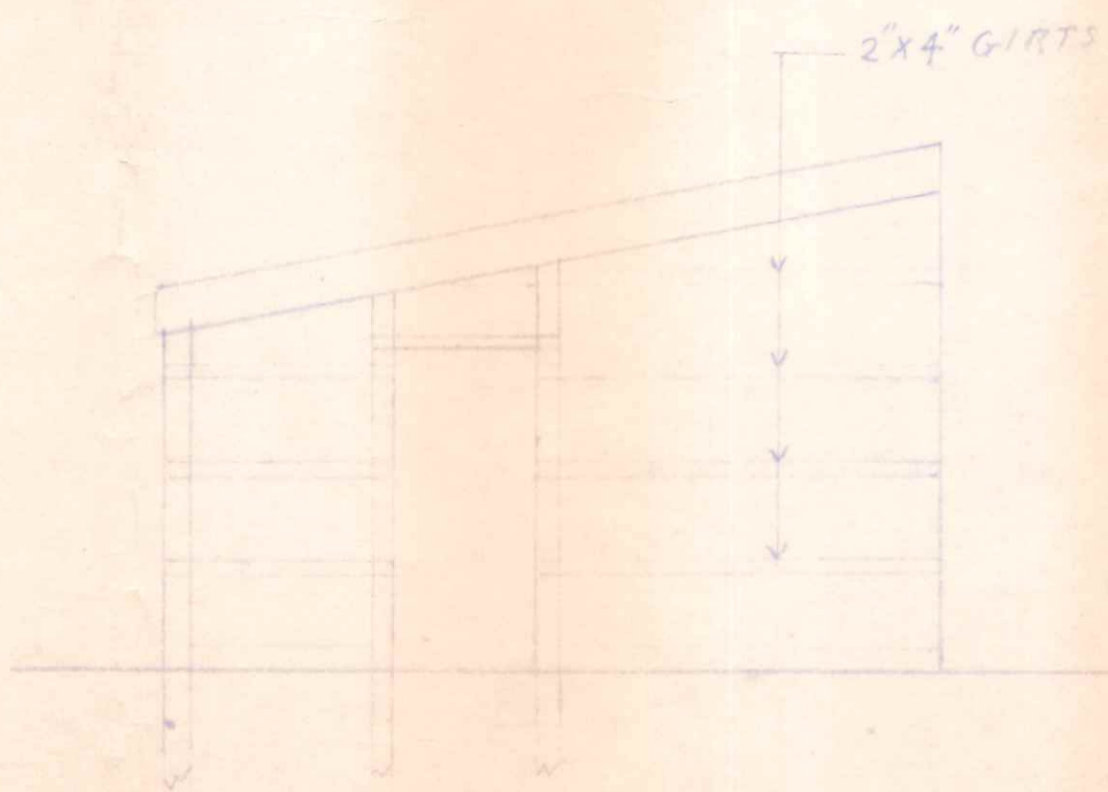
LEAN TO SIDE ELEVATION 8" = 1"

2" X 4" GIRTS @ 2'-0" O.C. APPROX



CROSS SECTION 1/4" = 1'-0"

1'-0" X 8" CONCRETE PAD



END FRAMING 1/4" = 1'-0"

523
E.E.
Riverview
Ave.

CITY OF NAPOLEON
ENGINEERING DEPT.
PLAN APPROVAL
BY: BJ DATE: 2/3/76

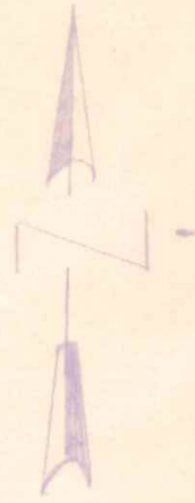
RECEIVED

FEB 5 1976
CITY OF NAPOLEON
ENGINEERING DEPT.
BY: L.W.S.

R. J. *[Signature]*

STATE OF OHIO
REGISTERED
PROFESSIONAL ENGINEER
HAROLD L. GERRARD
33142

MID-AMERICAN BUILDINGS, INC.



PLAT OF SURVEY

OUTLOTS No 5, 25 & 26 IN R.K. SCOTT'S 1ST.
ADDITION TO THE CITY OF NAPOLEON, OHIO

ALSO BEING A PORTION OF THE ABANDONED MIAMI &
ERIE CANAL LANDS IN THE NORTHWEST QUARTER (1/4)
OF SECTION 16, T-5-N, R-7-E, LIBERTY TOWNSHIP,
HENRY COUNTY, OHIO

FOR TERRY LEE MICHAELS

BY MID-AMERICAN BUILDING INC.

S.R. 124

TRANSIT LINE M&E CANAL
216.31'

40.10'

43.53'

92.91'

237.11'

14.41'

14.41'

5' 44.58" W

S 45° 43' - 20" W
5' 46" - 15" - 13" W DEED

4742'

4742'

9° 20'

9° 20'

128'

21'

1651'

744' CANAL TRANSIT LINE TO RIVER

556.38 E

357.91'

300'

575'

575'

300'

300'

300'

300'

300'

300'

300'

300'

300'

300'

300'

300'

300'

300'

300'

300'

300'

300'

300'

300'

300'

300'

300'

300'

300'

300'

300'

300'

300'

300'

300'

300'

300'

300'

300'

300'

300'

300'

300'

300'

300'

300'

300'

300'

300'

300'

300'

300'

300'

300'

300'

300'

300'

300'

300'

300'

300'

300'

300'

300'

300'

300'

300'

300'

300'

300'

300'

300'

300'

300'

300'

300'

300'

300'

300'

300'

300'

300'

300'

300'

300'

300'

300'

300'

300'

300'

300'

300'

300'

300'

SCALE 1" = 50'

MAUMEE RIVER

RECEIVED

FEB 5 1976

CITY OF NAPOLEON
ENGINEERING DEPT.
BY: *[Signature]*

P-11